

**ai DESIGN GROUP**

ARCHITECTURE / INTERIORS  
 101 W. Worthington Ave. Phone (704) 731-8080  
 Suite 207 Fax (704) 731-8090  
 Charlotte, NC 28203 www.aidesign.com

REFERENCE: VACANT SPACE - FLOOR 1

PROJ. NO.:

DATE: 04.02.03

DRAWN BY.: MM

CHECKED BY.: MM

f:\Spectrum\Interstate Tower\Active\I-sp01.dgn

SHEET TITLE:

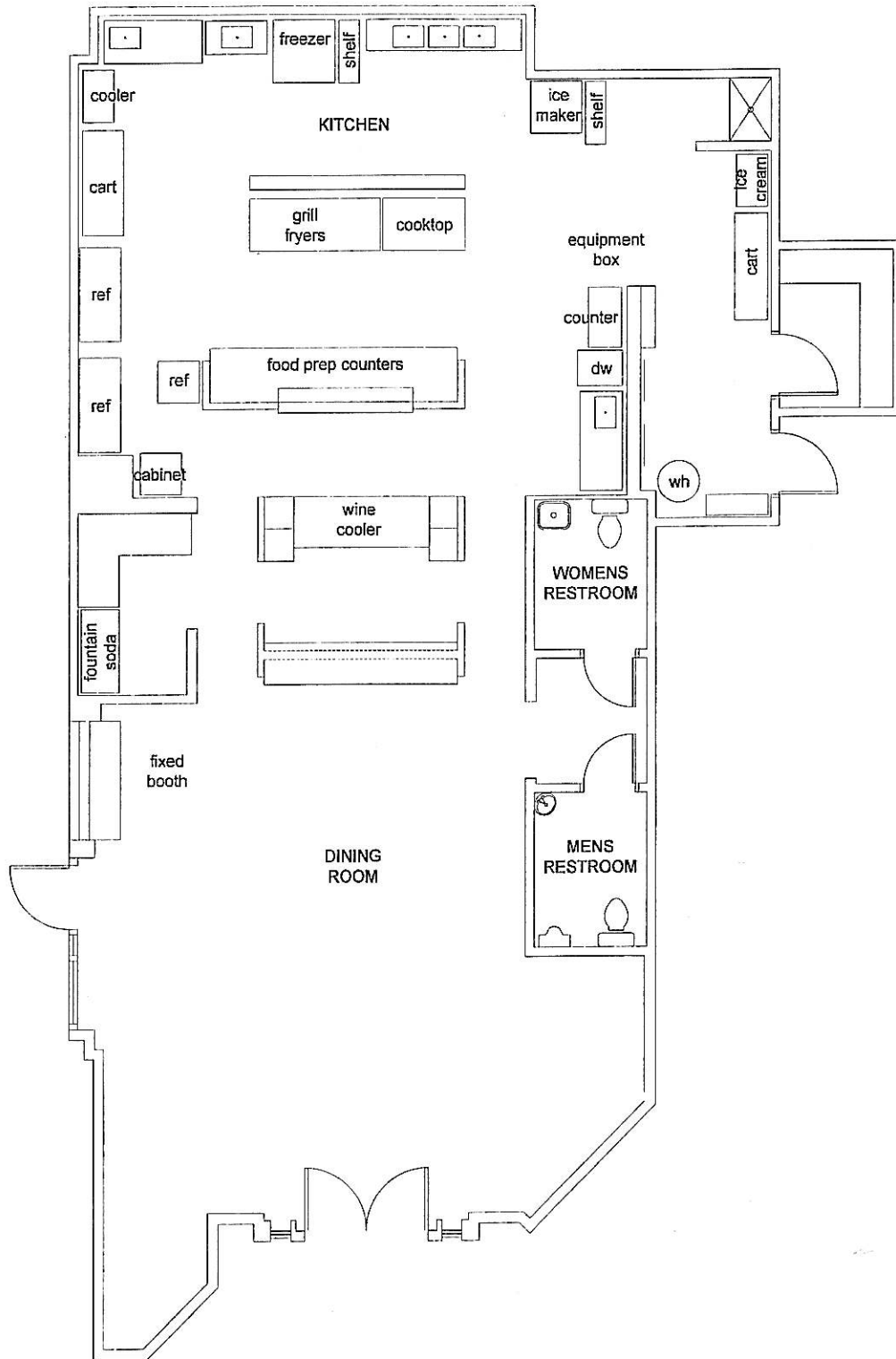
EXISTING SPACE PLAN  
 1006 USF

PROJECT NAME:

VACANT SPACE  
 FLOOR 1  
 INTERSTATE TOWER

DO NOT SCALE DRAWINGS. VERIFY DIMENSIONS  
 PRIOR TO CONSTRUCTION. REPORT ERRORS  
 AND OMISSIONS TO THE ARCHITECT IMMEDIATELY.

SUPPLEMENTAL  
 DRAWING NO.: XP-01



**ai DESIGN GROUP**

ARCHITECTURE / INTERIORS  
101 W. Worthington Ave. Phone (704) 731-8080  
Suite 207 Fax (704) 731-6090  
Charlotte, NC 28203 www.aidsgroup.com



SPECTRUM PROPERTIES  
WE DEVELOP RELATIONSHIPS

201 S. TRYON ST.  
CHARLOTTE, NC 28202

SHEET TITLE:

EXISTING SPACE PLAN  
1745 USF

PROJECT NAME: VACANT SPACE-DINING ROOM  
FLOOR I  
INTERSTATE TOWER

DO NOT SCALE DRAWINGS. VERIFY DIMENSIONS  
PRIOR TO CONSTRUCTION. REPORT ERRORS  
AND OMISSIONS TO THE ARCHITECT IMMEDIATELY.

SUPPLEMENTAL  
DRAWING NO.: XP-01

REFERENCE: VACANT SPACE - FLOOR I

PROJ. NO.:

DATE: 05.07.03

DRAWN BY: MM

CHECKED BY: MM

SCALE: 1/8" = 1'-0"